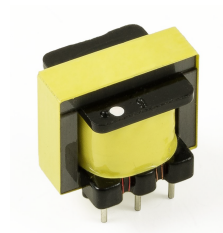




AUDIO TRANSFORMER

AT4412



- For Data/Voice Coupling Applications
- Industrial Operating Temp: -40°C to +85°C

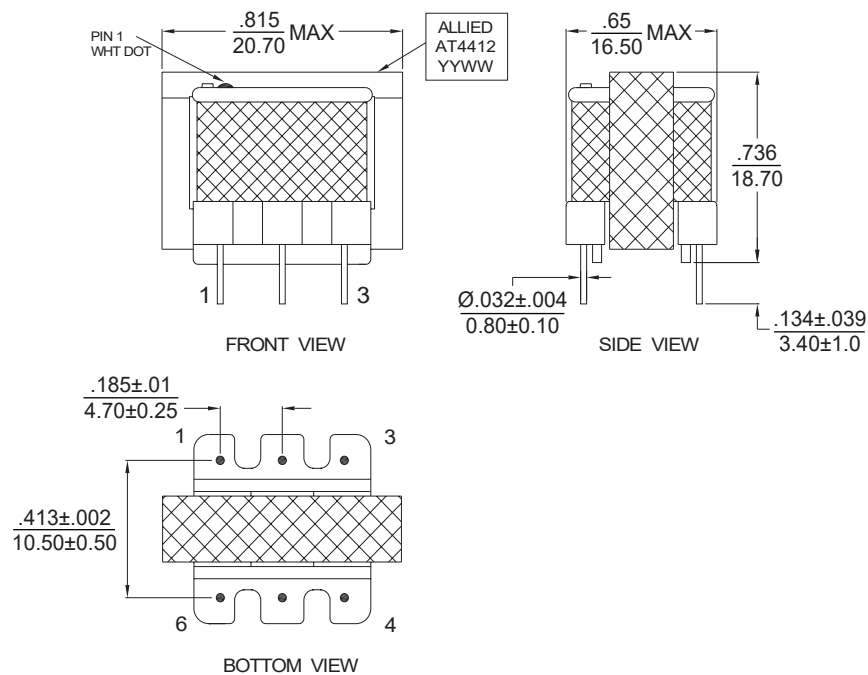
Electrical Specifications @25°C

Impedance (Ω)			Turns Ratio ($\pm 2\%$)	Insertion Loss	Freq. Response	DCR ($\Omega \pm 20\%$)		Hi-Pot (60S)		
@ 1KHz	300Hz-3.5KHz	500Hz-2.5KHz	(1 - 3) : (4 - 6)	@ 1KHz	@300Hz-3KHz	(1 - 3)	(4 - 6)	Pri-Sec	Pri-Core	Sec-Core
600 $\pm 10\%$	600+15%/-5%	600+10%/-5%	1 : 1	1.4dB Max	± 0.5 dB	44	56	1500V	1500V	1000V

All specifications subject to change without notice.

MECHANICAL

Dimensions: $\frac{\text{inch}}{\text{(mm)}}$



SCHEMATICS

