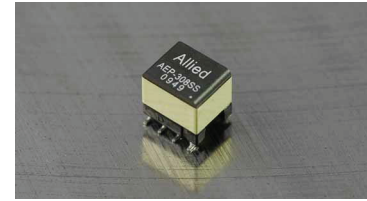




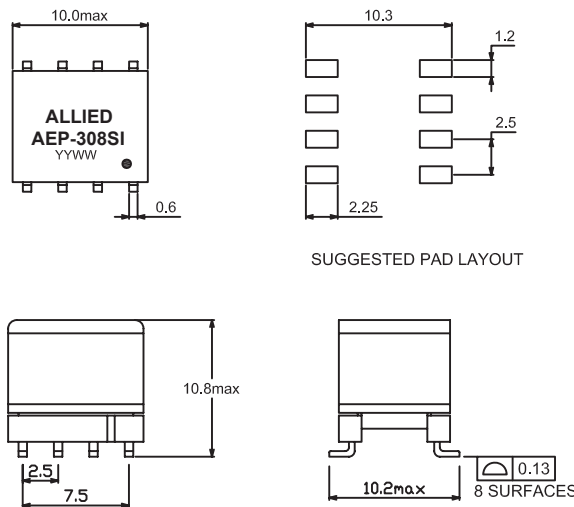
- Transformer
- EN60950 Basic Insulation Compliant-250Vrms
- Surface Mount Device Providing Compact Footprint
- Operating Temperature Range: -40°C to +85°C



Electrical Specifications @25°C								
Allied Part Number	Turns Ratio		OCL (500KHz,0.1V)	LL (500KHz,0.1V)	DCR			Hi-Pot VDC (1mA/1s)
	AEP-308SI	1-8:3-6	1-8:4-5	1-8	1-8 (short 3-6, 4-5)	1-8	3-6	
	1:1.27±3%	1:1.27±3%	2.4µH±10%	0.15µH Max	0.032Ω±20%	0.135Ω±20%	0.135Ω±20%	

All specifications subject to change without notice.

**MECHANICAL**



Unless otherwise specified all tolerances are: ± 0.25 in mm

**SCHEMATICS**

