



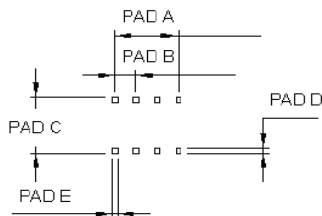
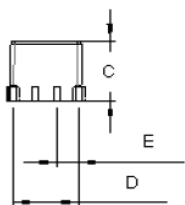
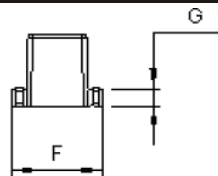
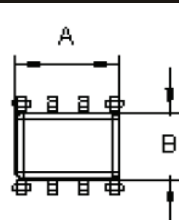
- 8 Pin Surface Mount
- XDSL / Gate and Drive transformer applications
- Industrial Operating Temperature range: -40°C to +85°C
- Reflow Condition: Maximum reflow temperature is 250°C/-5°C for 20-40 seconds (Refer to IPC/JEDEC J-STD-02C Standard)



Electrical Specifications @25°C		
Turn Ratio @ 10KHz , 100mV (1-8):(4-5)	Inductance Lp@ 10KHz , 0.1V (1-8), (4-5)	Leakage Inductance Ls@ 100KHz , 0.1V (1-8), (4-5 Short)
1:1±2%	1.2mH min	0.60µH max
DCR @ 10KHz , 0.1 V Pri (1-8)	DCR @ 10KHz , 0.1 V Sec (4-5)	HI-POT Pri-Sec 60sec/1mA
0.91Ωmax	0.91 Ωmax.	1500VAC

All specifications subject to change without notice.

MECHANICAL



Unit : mm/inch

A=8.38/0.330

B=5.84/0.230

C=7.49/0.295

D=7.62/0.300

E=2.54/0.100

F=8.64/0.340

G=1.83/0.072

PDA-A=7.62/0.300

PDA-B=2.54/0.100

PDA-C=7.37/0.290

PDA-D=1.40/0.055

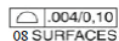
PDA-E=1.40/0.055

Marking :



Remark:
YYWW=DATE CODE, YY=YEAR, WW=WEEK

Packaging : 450pcs Reel



Unless otherwise specified, all tolerance are ± 0.25mm / 0.010

SCHEMATICS

