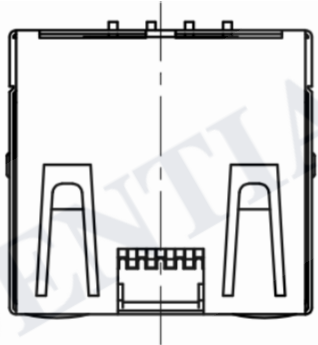
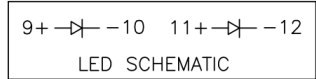
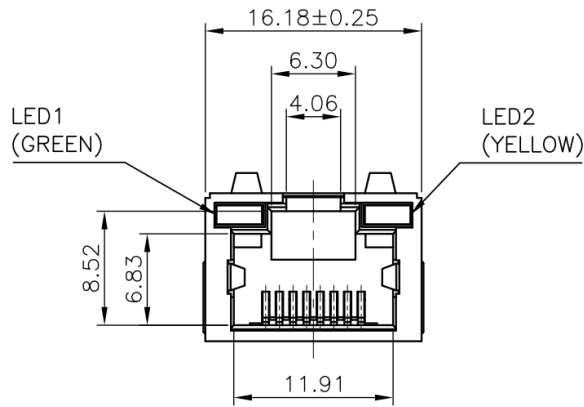
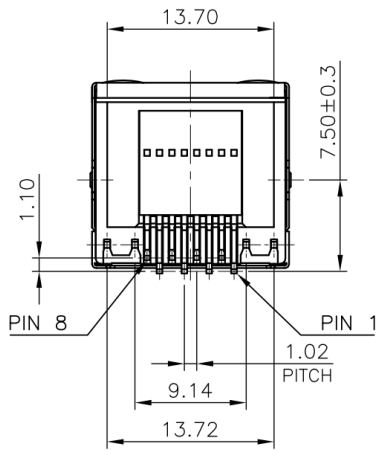


DESCRIPTION	DATE	APPD
	10/17/2009	



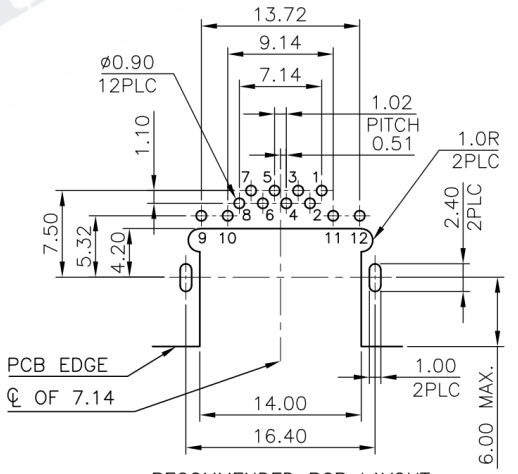
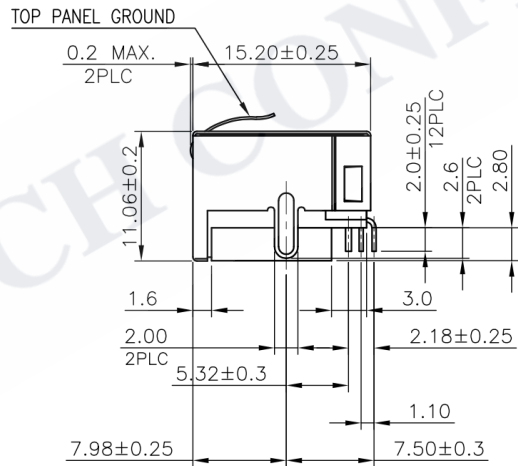
NOTES:
CAVITY CONFIRMS TO FCC RULES AND REGULATION PART 68, SUBPART F.

1. CONNECTOR MATERIALS:

- 1.1 HOUSING: PA46, WITH GLASS FIBER, UL94V-0, STANDARD COLOR-BLACK
- 1.2 INSERT HOUSING: PA46, WITH GLASS FIBER, UL94V-0, STANDARD COLOR-BLACK.
- 1.3 CONTACTS : PHOSPHOR BRONZE
- 1.4 SHELL: BRASS.
- 1.5 LED SOLDER TAIL: STEEL.

2. FINISH:

- 2.1 CONTACT PLATING: 6µ" [0.152 µm] GOLD PLATED ON CONTACT AREA, GOLD FLASH ON SOLDER TAIL, 50µ" [1.27 µm] MIN. NICKEL UNDERPLATED OVERALL.
- 2.2 SHELL: 20µ" [0.508 µm] MIN. NICKEL PLATED.
- 2.3 LED SOLDER TAIL: 80µ" [2.032 µm] MIN. TIN PLATED.



RECOMMENDED PCB LAYOUT
PCB THICKNESS: 1.2mm
TOLERANCE: ±0.05mm (TOP VIEW)



X:X ±0.30	APPD: Jessie	TELEWIRE TECHNOLOGY CO., LIMITED
X:XX ±0.25	CHKD: Kevin	
X:XXX ±0.05	DR: Michael	RJ45 Connector without Integrated Magnetics, Side Entry, Dip Type
ANGLES ±1°	UNIT: mm	PART NO. : TWE09339925S2L2LFG
	SCALE: 2/1	SHEET: 2/2
	REV: A	DWG NO. : TWE09339925S2L2LFG