

# ELTEK APPLIANCE



## FLOOD PREVENTION HOSE

*KEY DESIGN FEATURES*



**DESIGNED, ENGINEERED IN ITALY  
MANUFACTURED IN POLAND**

# APPLICATIONS



*Washing machine*



*Steam dryer*



*Steam oven*



*Dishwasher*

# FEATURE / BENEFIT SUMMARY

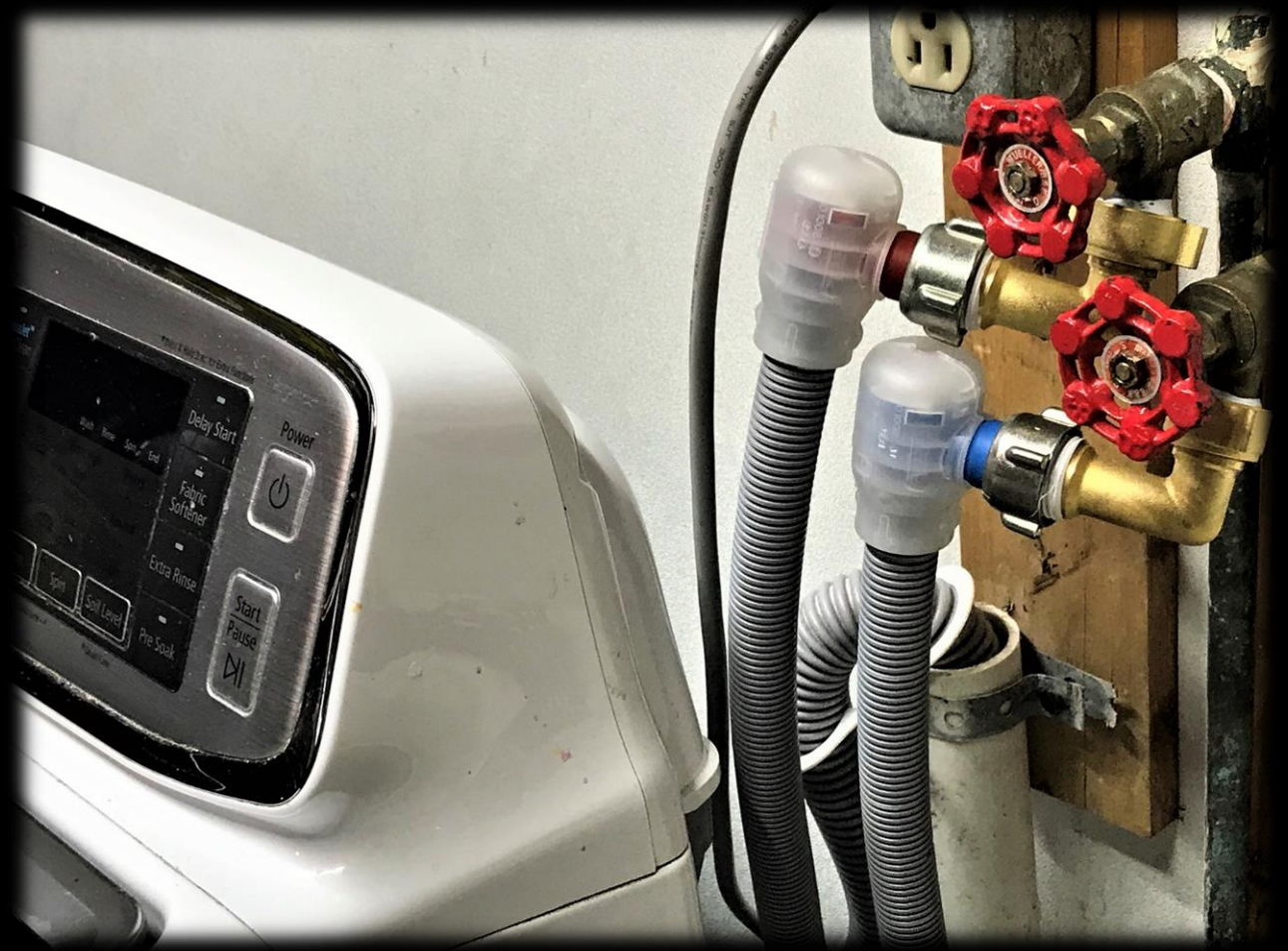
FEATURE	BENEFIT
Universal 3/4" Garden Hose Thread (GHT) connection	Install on any model or brand of appliance DIY installation Easy and quick install
2 HOSES-IN-1 construction Nylon braided inner hose and plastic corrugated outer hose	Leak proof, no possibility of water reaching the floor
Internal, embedded automatic shut-off valve in head of hose	Water supply is automatically shutoff when leak detected, no property damage
Longer crimp size	Less stress on hose connection, especially with machine vibration
2 layers of plastic protection over crimp area	Protects crimp from humidity that can cause corrosion
90° elbows on input and output connections	Reduces stress on hose to eliminate early failure
5- Year Manufacturer insurance policy	If any water damage due to workmanship, claim is paid by manufacturer
FAIL-SAFE engineering design	<b>PEACE-OF-MIND</b> Homeowner can request lower insurance premium or deductible from carrier Installer can request lower insurance premium or deductible from carrier No need to replace hose every 5 years Lower lifetime cost of single buy vs. two hose purchases required over 10 years

# KEY DESIGN FEATURE #1

## UNIVERSAL HOSE CONNECTIONS FOR DIY INSTALLATION

*Whirlpool, Maytag, GE, Samsung, LG, Electrolux, Midea, Miele, Bosch, etc*

- *Install on any model of washing machine, dishwasher, or steam dryer.*
- *Simple and straightforward installation.*



# KEY DESIGN FEATURE #2

## 2 -IN-1 DUAL HOSE CONSTRUCTION

1. NYLON BRAIDED INNER HOSE
2. PLASTIC CORRUGATED OUTER HOSE

*Outer hose captures any leak and through air pressure activates valve in hose head.*

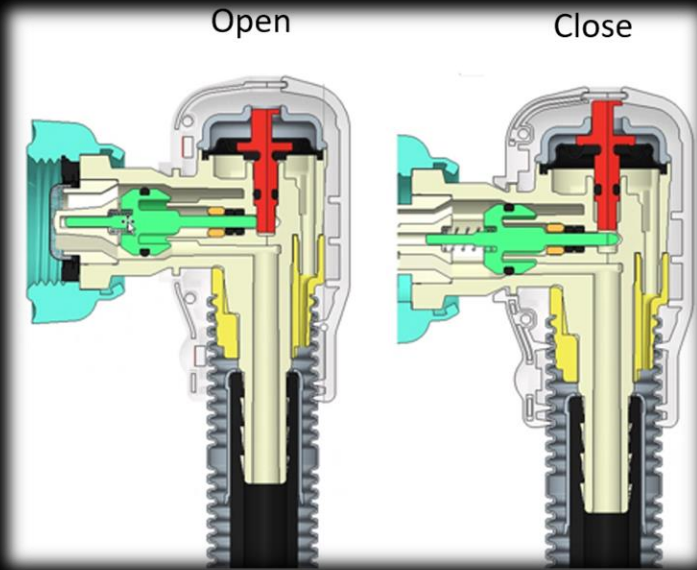
Cutaway view of hose

PEACE OF MIND

# KEY DESIGN FEATURE #3

## INTERNAL SHUT-OFF VALVE

*Stops flow immediately if leak detected*



### **Mechanical Safety Hose Operation**

*If water were to leak from the internal nylon braided hose, a rise in pressure is created in the volume between the nylon braided hose and the external corrugated hose. As the pressure increases through the rubber gasket and passage, the resulting pressure increase in the chamber causes a pushing force on the diaphragm which raises the red indicator shaft to release the valve and enable it to close securely.*



**PEACE OF MIND**

# KEY DESIGN FEATURE #4

## CRIMP CONNECTION & 2X PROTECTION



Crimp is enclosed within plastic corrugated hose. This provides protection from humidity and abrasion and if ever a leak, water is captured inside hose



Plastic body casing provides second layer of protection



Greater crimp surface coverage area for better protection and support.

# PEACE OF MIND



# KEY DESIGN FEATURE #5

## *90° BEND IN BOTH CONNECTORS*

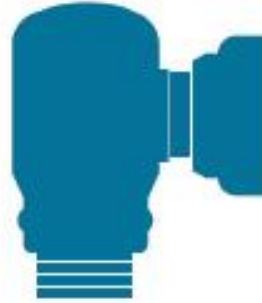
*90° bend on both ends of hose for stress relief on crimp connections. Delivers quality and protection to vulnerable areas of hose structure.*



**PEACE OF MIND**

5 YEAR CERTIFICATE OF INSURANCE W/ 5 YEAR PRODUCT WARRANTY

**ELTEK**  
APPLIANCE  
AN ELTEK GROUP DIVISION



**Flood Prevention Hose**  
WITH WATER SHUTOFF



WARRANTY - GARANTIE - GARANTIA

# APPLIANCE OEMS CUSTOMER LIST

## Washing Machine and Dishwashers **SAFETY HOSE**

### **Sold in USA through Bosch direct.**

- 300,000 hoses installed in USA on 500 & 800 Series washer
- Trade name AquaShield

### **Commonly sold in Europe.**

- LG Electronics
- Electrolux Appliances EMEA
- Samsung Electronics
- Midea
- Whirlpool EMEA
- V-Zug



# RETAIL BOXES

## WASHING MACHINE



## DISHWASHER



## HOSE & WATER BLOCK COMBO PACKAGE



# ELTEK GROUP

- HQ IN CASALE MONFERRATO, ITALY
- FOUNDED IN 1979
- > 1100 EMPLOYEES
- 7 MANUFACTURING PLANTS WORLDWIDE
- \$250M ANNUAL REVENUE
- SELL TO ALL TOP OEM APPLIANCE MANUFACTURERS IN WORLD
- IF YOU OWN A DISHWASHER MOST LIKELY YOU'LL FIND AN ELTEK DETERGENT DISPENSER INSIDE THE FRONT DOOR PANEL
- COMPANY MANUFACTURES WATER VALVES, PRESSURE SENSORS, AND LEAK PROTECTION SOLUTIONS
- OTHER BUSINESS UNITS INCLUDE AUTOMOTIVE AND MEDICAL