



珠海三泰克科技有限公司
San Technology (Zhuhai) Co., Ltd.

SPECIFICATION FOR LCD Module

Customer P/N:

Santek P/N: ST0800C11W-RSCLW-F

DOC. Revision: RS01

Customer Approval:

--

	SIGNATURE	DATE
PREPARED BY	Park Zhou	2024.06.04
CHECKED BY		
APPROVED BY	<i>Natty Lee</i>	2024.Jul.29

Document Revision History

Version	Revise Date	Description	Changed by
RS01	2024-06-04	Initial release	Park Zhou

Santek / CONFIDENTIAL

Table of Contents

1. General Specifications	3
2. Pin Assignment	4
2.1. LCD Driving Section	4
3. Operation Specifications	7
3.1. Absolute Maximum Rating	7
3.1.1. Typical Operation Conditions	8
3.1.2. Current Consumption	9
3.1.3. Backlight Driving Conditions	9
3.2. Power Sequence	10
3.3. Timing Characteristics	12
3.3.1. AC Electrical Characteristics	12
3.3.3. Timing Diagram	13
4. Optical Specifications	15
5. Reliability Test Items	19
6. General Precautions	20
6.1. Safety.....	20
6.2. Handling	20
6.3. Static Electricity.....	20
6.4. Storage.....	20
6.5. Cleaning.....	20
7. Mechanical Drawing	21
8. Package Drawing	23

1. General Specifications

No.	Item	Specification	Remark
1	LCD size	8.0 inch(Diagonal)	
2	Driver element	a-Si TFT active matrix	
3	Resolution	800 × 3(RGB) × 600	
4	Display mode	Normally White, Transmissive	
5	Dot pitch	0.0675(W) × 0.2025(H) mm	
6	Active area	162.0(W) × 121.5(H) mm	
7	Module size	176.28(W) × 138.2(H) × 7.9(D) mm	Note 1
8	Surface treatment	Anti-Glare	
9	Color arrangement	RGB-stripe	
10	Interface	Digital	
11	Backlight power consumption	1.674W (Typ.)	
12	Panel power consumption	0.356W(Typ.)	
13	Weight (approximately)	315g	
14	IC	EK79713BCGB+EK73215BCGA	
15	Inversion	1+2dot	
16	Framerate	60Hz	

Note 1: Refer to Mechanical Drawing.

2. Pin Assignment

2.1 LCD Driving Section

FPC Connector is used for the module electronics interface. The recommended model is FH12A-50S-0.5SH manufactured by Hirose.

Pin No.	Symbol	I/O	Function	Remark
1	NC		Nc Connection	
2	NC		Nc Connection	
3	NC		Nc Connection	
4	NC		Nc Connection	
5	GND	P	Power ground	
6	V _{COM}	I	Common voltage	
7	V _{CC}	P	Power for Digital circuit	
8	MODE	I	DE/SYNC mode select	Note3
9	DE	I	Data Input Enable	
10	VS	I	Vertical Sync Input	
11	HS	I	Horizontal Sync Input	
12	B7	I	Blue data(MSB)	
13	B6	I	Blue data	
14	B5	I	Blue data	
15	B4	I	Blue data	
16	B3	I	Blue data	
17	B2	I	Blue data	
18	B1	I	Blue data	
19	B0	I	Blue data(LSB)	
20	G7	I	Green data (MSB)	
21	G6	I	Green data	
22	G5	I	Green data	
23	G4	I	Green data	
24	G3	I	Green data	
25	G2	I	Green data	
26	G1	I	Green data	
27	G0	I	Green data (LSB)	
28	R7	I	Red data (MSB)	
29	R6	I	Red data	
30	R5	I	Red data	
31	R4	I	Red data	
32	R3	I	Red data	

33	R2	I	Red data	
34	R1	I	Red data	
35	R0	I	Red data (LSB)	
36	GND	P	Power ground	
37	DCLK	I	Sample clock	
38	GND	P	Power ground	
39	L/R	I	Right/ left selection	Note2,5
40	U/D	I	Up/down selection	Note2,5
41	V _{GH}	P	Gate ON voltage	
42	V _{GL}	P	Gate OFF voltage	
43	AV _{DD}	P	Power for Analog circuit	
44	RESET	I	Global reset pin.	Note1
45	NC	-	No connection	
46	V _{COM}	I	Common voltage	
47	DITHB	I	Dithering function	Note 4
48	GND	P	Power ground	
49	NC	-	No connection	
50	NC	-	No connection	

I: input, O: output, P: Power

Note 1: Global reset pin. Active Low to enter Reset State. Suggest to connecting with an RC reset circuit for stability. Normally pull high.

Note 2: Selection of scanning mode

Setting of scan control input		Scanning direction
U/D	R/L	
GND	V _{CC}	Up to down, left to right
V _{CC}	GND	Down to up, right to left
GND	GND	Up to down, right to left
V _{CC}	V _{CC}	Down to up, left to right

Note 3: DE/SYNC mode select, Normally pull high.

H: DE mode.

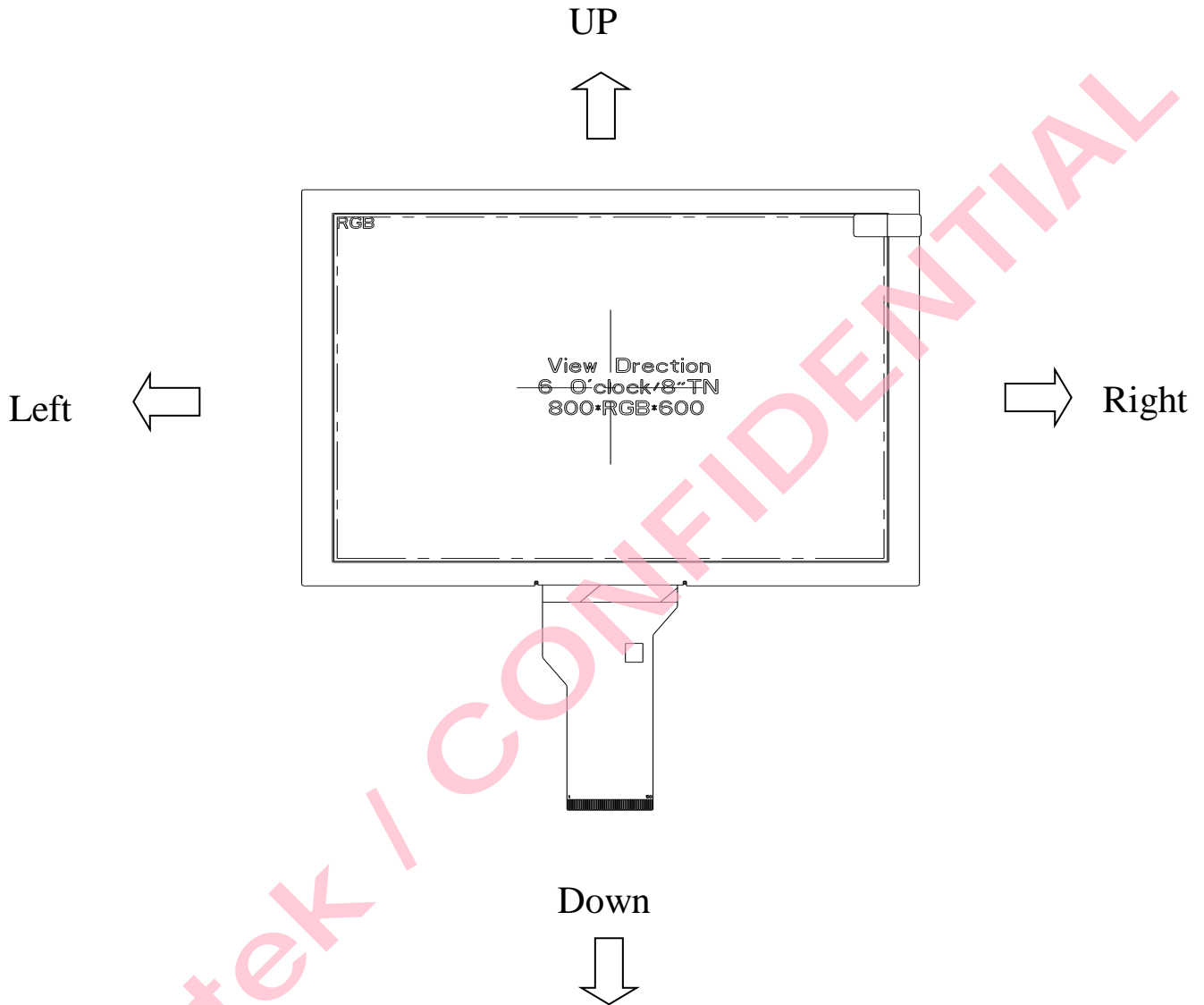
L: HS/VS mode.

Note4: Dithering function enable control. Normally pull high.

DITHB="1", Disable internal dithering function. For 18bit RGB interface, connect two LSB bits of all the R/G/B data buses to GND.

DITHB="0", Enable internal dithering function, For TTL 24bit parallel RGB image data input.

Note 5: Definition of scanning direction.
Refer to the figure as below:



2.2 Backlight Unit Section

Pin No.	Symbol	I/O	Function	Remark
1	V _{LED+}	P	Power for LED backlight anode	Pink
2	V _{LED-}	P	Power for LED backlight cathode	White

3. Operation Specifications

3.1. Absolute Maximum Rating

(GND=AV_{SS}=0V, Note 1)

Item	Symbol	Values		Unit	Remark
		Min.	Max.		
5Power voltage	V _{CC}	-0.5	5.0	V	
	AV _{DD}	-0.5	15.0	V	
	V _{GH}	-0.3	42.0	V	
	V _{GL}	-20.0	0.3	V	
	V _{GH} -V _{GL}	-0.3	40.0	V	
Operation Temperature Storage Temperature	T _{OP}	-20	70	°C	
	T _{ST}	-30	80	°C	
LED Reverse Voltage	V _R	-	0.8	V	each LED
LED Forward Current	I _F	-	80	mA	each LED

Note 1: The absolute maximum rating values of this product are not allowed to be exceeded at any times. Should a module be used with any of the absolute maximum ratings exceeded, the characteristics of the module may not be recovered, or in an extreme case, the module may be permanently destroyed.

3.1.1. Typical Operation Conditions

(GND=AV_{SS}=0V, Note 1)

Item	Symbol	Values			Unit	Remark
		Min.	Typ.	Max.		
Power voltage	V _{CC}	3.0	3.3	3.6	V	Note 2
	AV _{DD}	10.2	10.4	10.6	V	
	V _{GH}	15.5	16.0	16.5	V	
	V _{GL}	-7.5	-7.0	-6.5	V	
Input signal voltage	V _{COM}	3.5	4.0	4.5	V	Note 5
Input logic high voltage	V _{IH}	0.7V _{CC}	0.9V _{CC}	V _{CC}	V	Note4
Input logic low voltage	V _{IL}	0	0.1V _{CC}	0.3V _{CC}	V	
Ripple voltage	VRP	-	-	150	mV	Note 3

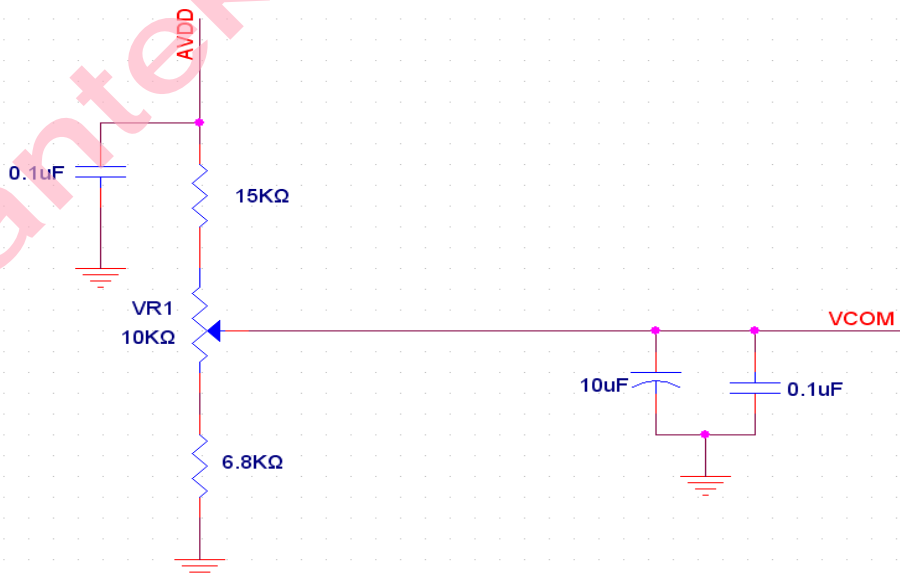
Note 1: Be sure to apply V_{CC} and V_{GL} to the LCD first, and then apply V_{GH}.

Note 2: V_{CC} setting should match the signals output voltage (refer to Note 3) of customer's system board .

Note 3: Including signal: V_{DD}, AV_{DD}, V_{GH}, V_{GL}, V_{COM}

Note 4: DCLK,HS,VS,RSTB,UPDN,STLR,MODE,DITHB.

Note 5: Typical V_{COM} is only a reference value, it must be optimized according to each LCM. Be sure to use VR;



3.1.2. Current Consumption

(GND=AV_{SS}=0V)

Item	Symbol	Values			Unit	Remark
		Min.	Typ.	Max.		
Current for Driver	I _{GH}	0.05	0.2	0.5	mA	V _{GH} =16.0V
	I _{GL}	0.05	0.2	1.0	mA	V _{GL} = -7.0V
	I _{CC}	1	5.5	10.0	mA	V _{CC} =3.3V
	I _{AVDD}	5	32.0	50.0	mA	AV _{DD} =10.4V

3.1.3. Backlight Driving Conditions

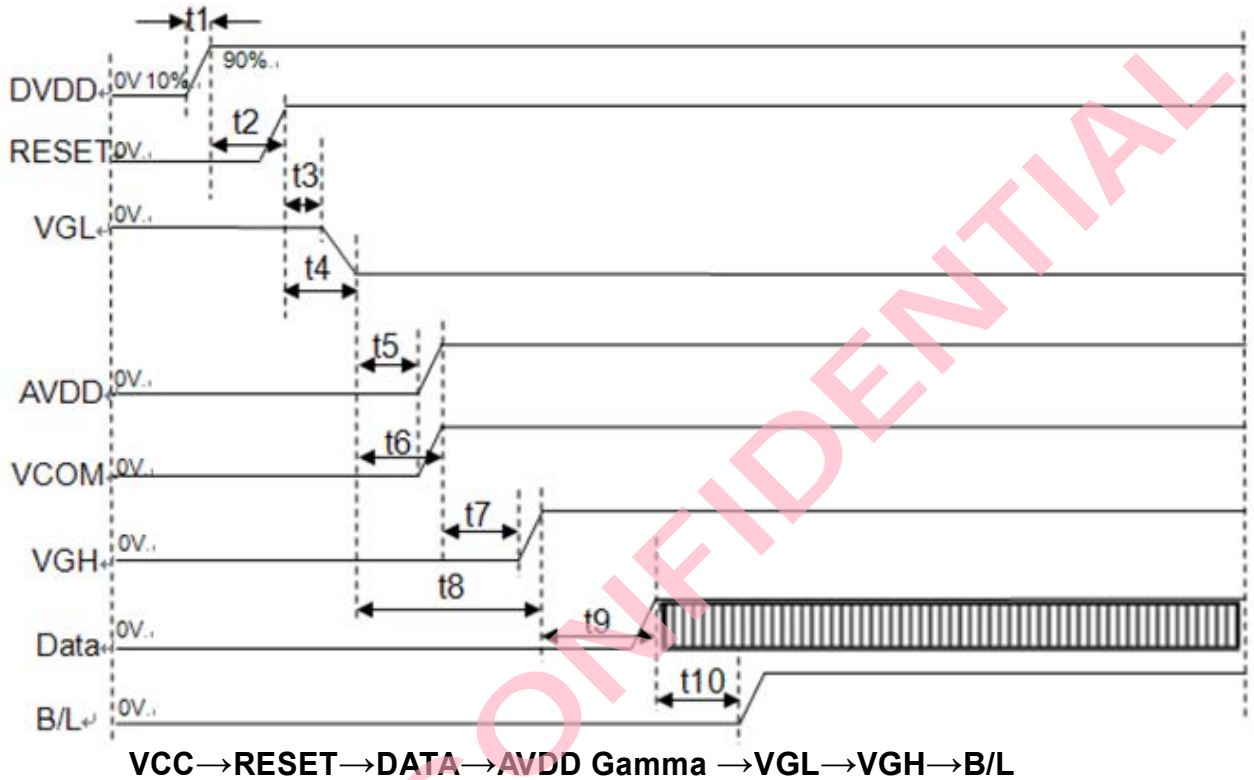
Item	Symbol	Values			Unit	Remark
		Min.	Typ.	Max.		
Voltage for LED backlight	V _L	14.1	18.1	22.1	V	Note 1
Current for LED backlight	I _L	-	400	-	mA	
LED life time	-	20,000	-	-	Hr	Note 2

Note 1: The LED Supply Voltage is defined by the number of LED at Ta=25°C and I_L =400mA

Note 2: The “LED life time” is defined as the module brightness decrease to 50% original brightness at Ta=25°C and I_L =400mA. The LED lifetime could be decreased if operating I_L is larger than 400 mA.

3.2. Power Sequence

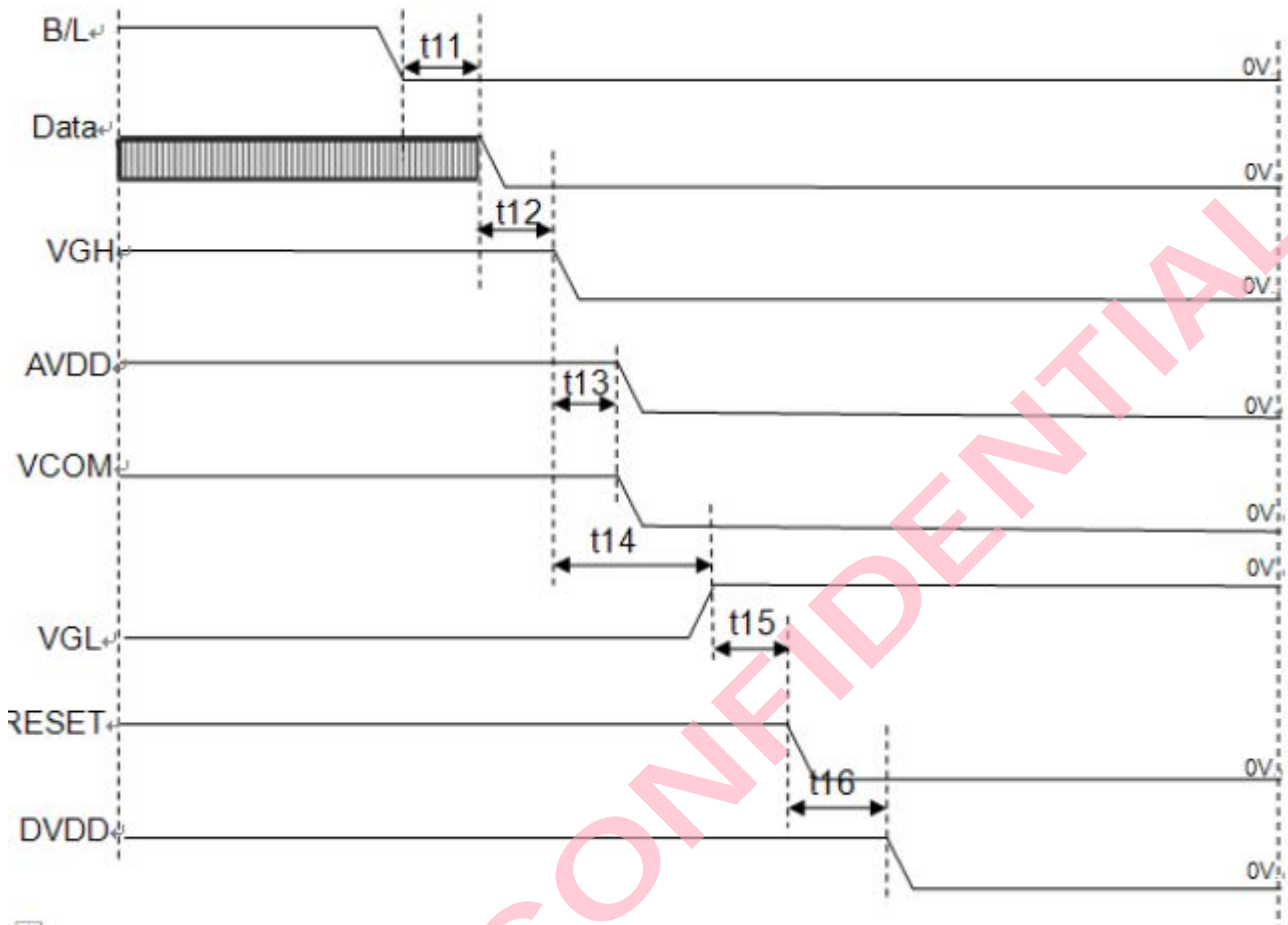
3.2.1. Power on:



Symbol	SPEC			Unit
	Min.	Typ.	Max.	
T1	0.5	5	20	ms
T2	1	1	1.5	ms
T3	10	15	20	ms
T4	20	22	24	ms
T5	1	2	3	ms
T6	5	6	7	ms
T7	1.5	2	4	ms
T8	10	12	15	ms
T9	150		500	ms
T10	180	190	200	ms

Note: Data include R0~R7, B0~B7, GO~G7, UD, LR, DCLK, HS, VS, DE.

3.2.2. Power off:



Symbol	SPEC			Unit
	Min.	Typ.	Max.	
T11	180	190	200	ms
T12	10	15	20	ms
T13	5	6	7	ms
T14	10	12	15	ms
T15	20	22	24	ms
T16	1	1.5	3	ms

Note: Data include R0~R7, B0~B7, GO~G7, STLR,UPDN, DCLK, HS,VS,DE.

3.3. Timing Characteristics

3.3.1. AC Electrical Characteristics

Item	Symbol	Values			Unit	Remark
		Min.	Typ.	Max.		
HS setup time	T_{hst}	8	10	12	Ns	
HS hold time	T_{hhd}	8	10	12	Ns	
VS setup time	T_{vst}	8	10	12	Ns	
VS hold time	T_{vhd}	8	10	12	Ns	
Data setup time	T_{dsu}	8	10	12	Ns	
Data hold time	T_{dhd}	8	10	12	Ns	
DE setup time	T_{esu}	8	10	12	Ns	
DE hold time	T_{ehd}	8	10	12	Ns	
VDD Power On Slew rate	T_{POR}	1	2	20	ms	
RSTB pulse width	T_{Rst}	10	20	50	us	
CLKIN cycle time	T_{coh}	20	25	30	Ns	
CLKIN pulse duty	T_{cwh}	40	50	60	%	

3.3.2. Timing

Item	Symbol	Values			Unit	Remark
		Min.	Typ.	Max.		
Horizontal Display Area	thd	800			DCLK	
DCLK Frequency	fclk	33	40	50	MHz	
One Horizontal Line	th	862	1056	1200	DCLK	
HS pulse width	thpw	1	6	40	DCLK	
HS Back Porch(Blanking)	thb	46	46	46	DCLK	

HS Front Porch	thfp	16	210	354	DCLK	
----------------	------	----	-----	-----	------	--

Item	Symbol	Values			Unit	Remark
		Min.	Typ.	Max.		
Vertical Display Area	tvd	600			TH	
VS period time	tv	624	635	700	TH	
VS pulse width	tvpw	1	3	20	TH	
VS Back Porch(Blanking)	tvb	23	23	23	TH	
VS Front Porch	tvfp	1	12	77	TH	

Note: Frame rate is $60 \pm 5\text{Hz}$

3.3.3. Timing Diagram

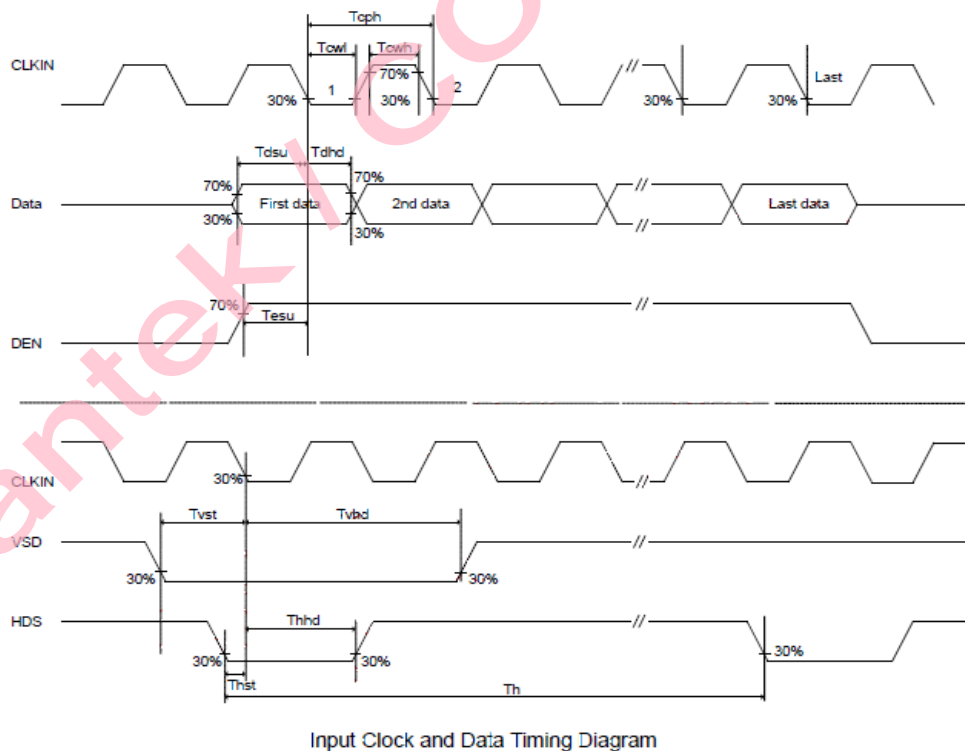


Figure 3.1 Input Clock and Data Timing Diagram

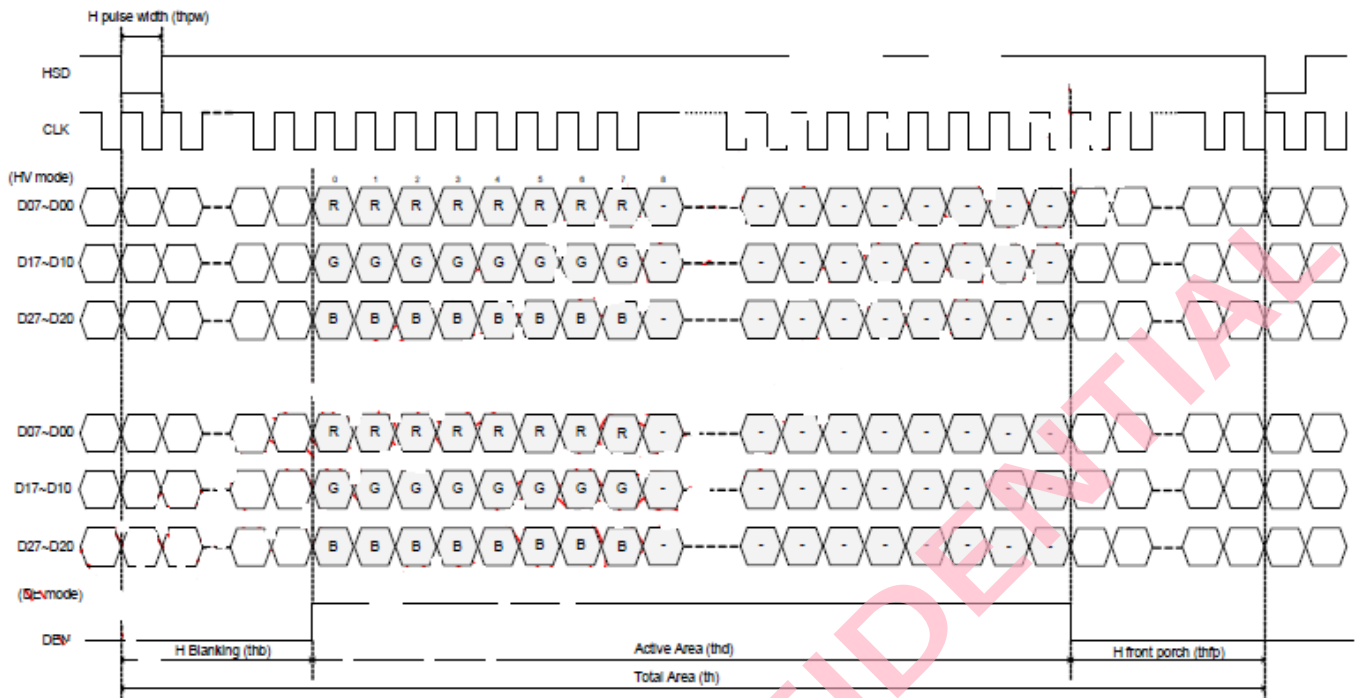


Figure 3.2 Horizontal input timing diagram.

4. Optical Specifications

5. Item	Symbol	Condition	Values			Unit	Remark
			Min.	Typ.	Max.		
Viewing angle (CR≥ 10)	θ_L	$\Phi=180^\circ$ (9 o'clock)	60	70	-	degree	Note 1
	θ_R	$\Phi=0^\circ$ (3 o'clock)	60	70	-		
	θ_T	$\Phi=90^\circ$ (12 o'clock)	40	50	-		
	θ_B	$\Phi=270^\circ$ (6 o'clock)	60	70	-		
Response time	T_{ON+} T_{OFF}	Normal $\theta=\Phi=0^\circ$	-	25	50	msec	Note 3
Contrast ratio	CR		800	1000	-	-	Note 4
Color chromaticity	W_X		0.26	0.31	0.36	-	Note 2 Note 5 Note 6
	W_Y		0.28	0.33	0.38	-	
	R_X		0.55	0.60	0.65	-	
	R_Y		0.30	0.35	0.40	-	
	G_X		0.29	0.34	0.39	-	
	G_Y		0.53	0.58	0.63	-	
	B_X		0.11	0.16	0.21	-	
	B_Y		0.04	0.09	0.14	-	
Luminance	L	1000	1200	-	cd/m ²	Note 6	
Luminance uniformity	Y_U	70	75	-	%	Note 7	
Color Saturation (NTSC)	NTSC	Normal $\theta=\Phi=0^\circ$ CLE 1931	45	50	-	%	Note 2 Note 5 Note 6

Test Conditions:

- $V_{CC}=3.3V$, $I_L=400mA$ (Backlight current), the ambient temperature is $25^\circ C$.
- The test systems refer to Note 2.

Note 1: Definition of viewing angle range

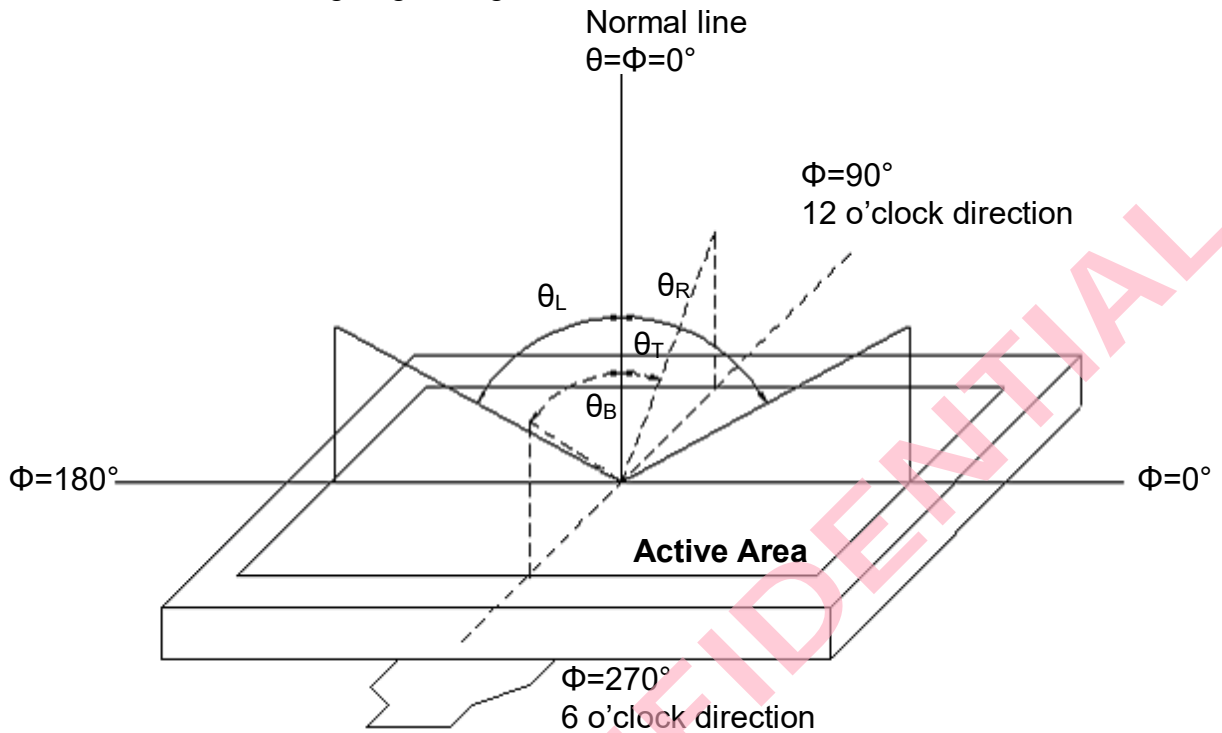


Fig. 4-1 Definition of viewing angle

Note 2: Definition of optical measurement system.

The optical characteristics should be measured in dark room. After 30 minutes operation, the optical properties are measured at the center point of the LCD screen. (Optical items are measured by CS2000/Field of view: 1° /Height: 500mm..)

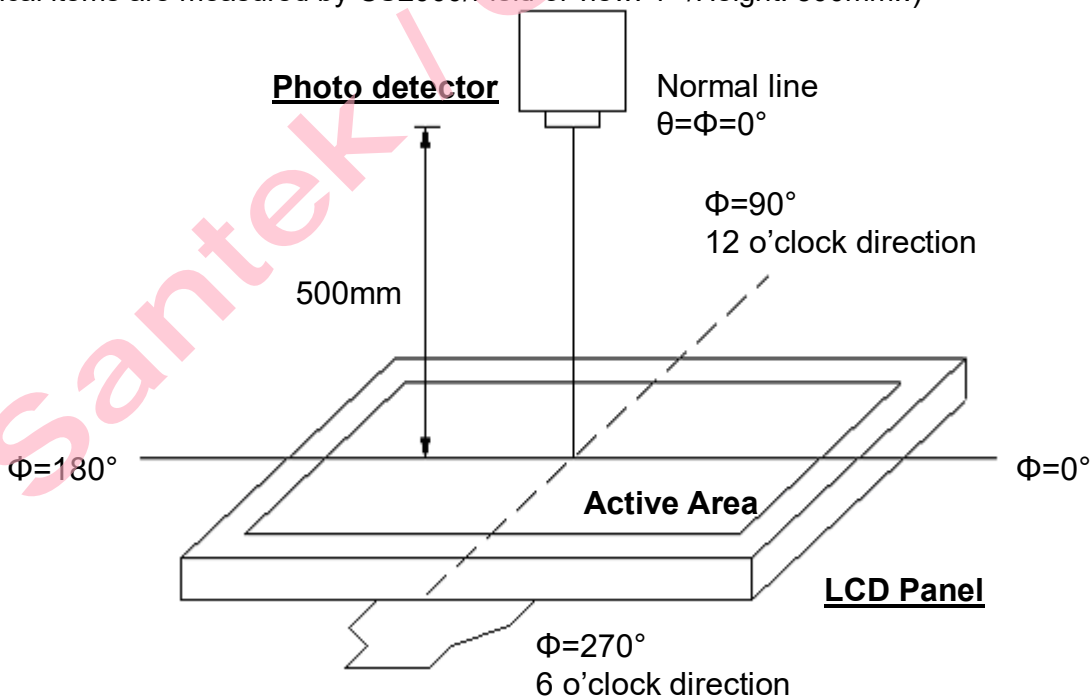


Fig. 4-2 Optical measurement system setup

Note 3: Definition of Response time

The response time is defined as the LCD optical switching time interval between “White” state and “Black” state. Rise time (T_{ON}) is the time between photo detector output intensity changed from 90% to 10%. And fall time (T_{OFF}) is the time between photo detector output intensity changed from 10% to 90%.

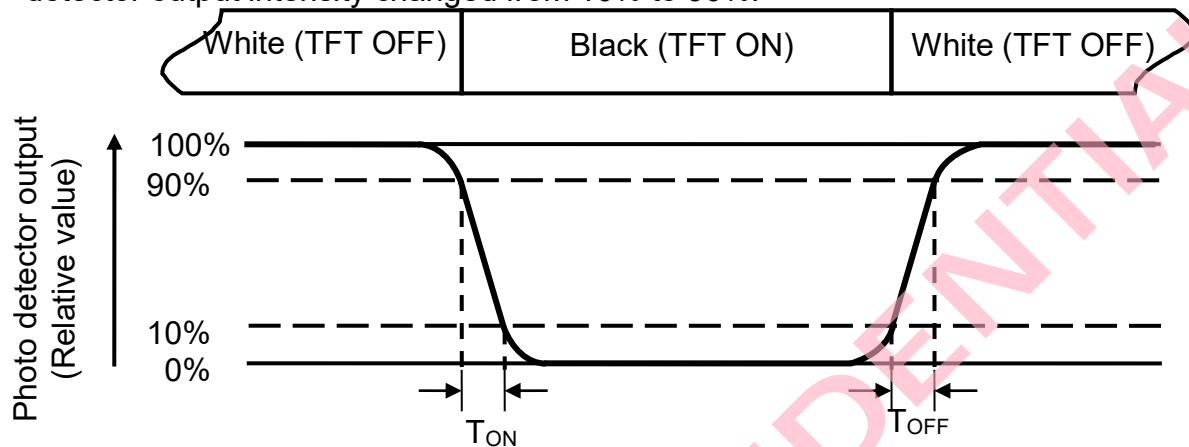


Fig. 4-3 Definition of response time

Note 4: Definition of contrast ratio

$$\text{Contrast ratio (CR)} = \frac{\text{Luminance measured when LCD on the "White" state}}{\text{Luminance measured when LCD on the "Black" state}}$$

Note 5: Definition of color chromaticity (CIE1931)

Color coordinates measured at center point of LCD.

Note 6: Definition of luminance:

Measured at the center area of the panel when LCD panel is driven at “white” state. The LED driving condition is $I_L=180\text{mA}$.

Note 7: Definition of Luminance Uniformity

Active area is divided into 9 measuring areas (Refer to Fig. 4-4).Every measuring point is placed at the center of each measuring area.

$$\text{Luminance Uniformity}(Yu) = \frac{B_{min}}{B_{max}}$$

L-----Active area length W----- Active area width

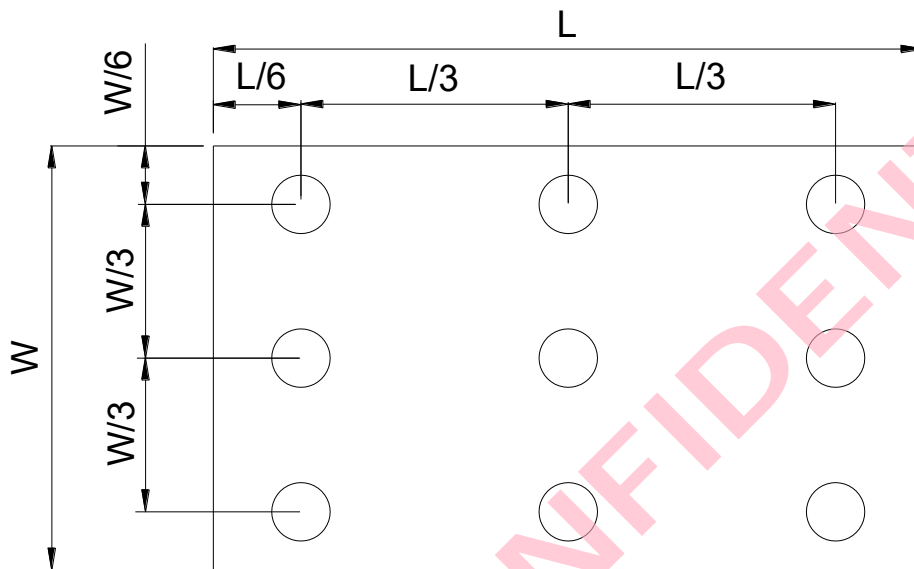


Fig. 4-4 Definition of measuring points

B_{max}: The measured maximum luminance of all measurement position.

B_{min}: The measured minimum luminance of all measurement position.

5. Reliability Test Items

Item	Test Conditions		Remark
High Temperature Storage	+80°C	240hrs	Note 1, 2
Low Temperature Storage	-30°C	240hrs	Note 1, 2
High Temperature Operation	+70°C	240hrs	Note 1, 2
Low Temperature Operation	-20°C	240hrs	Note 1, 2
Operate at High Temperature and Humidity	+40°C, 90%RH	240hrs	Note 1, 2
Thermal Shock	-30°C/30 min ~ +80°C/30 min for a total 10 cycles, Start with cold temperature and end with high temperature		IEC60068-2-14 GB/T 2423.22-87
Vibration Test	Frequency Range:10-55Hz, Stroke 1.5mm Sweep:10Hz-55Hz-10Hz, 2Hours,for X, Y, Z		IEC60068-2-6 GB/T 2423.10-1995
Package Drop Test	1 corner, 3 edges, 6 surfaces		IEC60068-2-32 GB/T 2423.8-1995
Electro Static Discharge	C=150pF,R=330Ω, 5points/panel Air: ± 4KV, 5times, Contact: ± 2KV,5times.		IEC61000-4-2

Note 1: The test samples have recovery time need more than 2 hours at room temperature before the function check. In the standard conditions, there is no abnormal display function occurred.

Note 2: After the reliability test, the product only guarantees operational function, but don't guarantee all of the cosmetic specification.

6. General Precautions

6.1. Safety

Liquid crystal is poisonous. Do not put it in your mouth. If liquid crystal touches your skin or clothes, wash it off immediately by using soap and water.

6.2. Handling

1. The LCD panel is plate glass. Do not subject the panel to mechanical shock or to excessive force on its surface.
2. The polarizer attached to the display is easily damaged. Please handle it carefully to avoid scratch or other damages.
3. To avoid contamination on the display surface, do not touch the module surface with bare hands.
4. Keep a space so that the LCD panels do not touch other components.
5. Put cover board such as acrylic board on the surface of LCD panel to protect panel from damages.
6. Transparent electrodes may be disconnected if you use the LCD panel under environmental conditions where the condensation of dew occurs.
7. Do not leave module in direct sunlight to avoid malfunction of the ICs.

6.3. Static Electricity

1. Be sure to ground module before turning on power or operating module.
2. Do not apply voltage which exceeds the absolute maximum rating value.

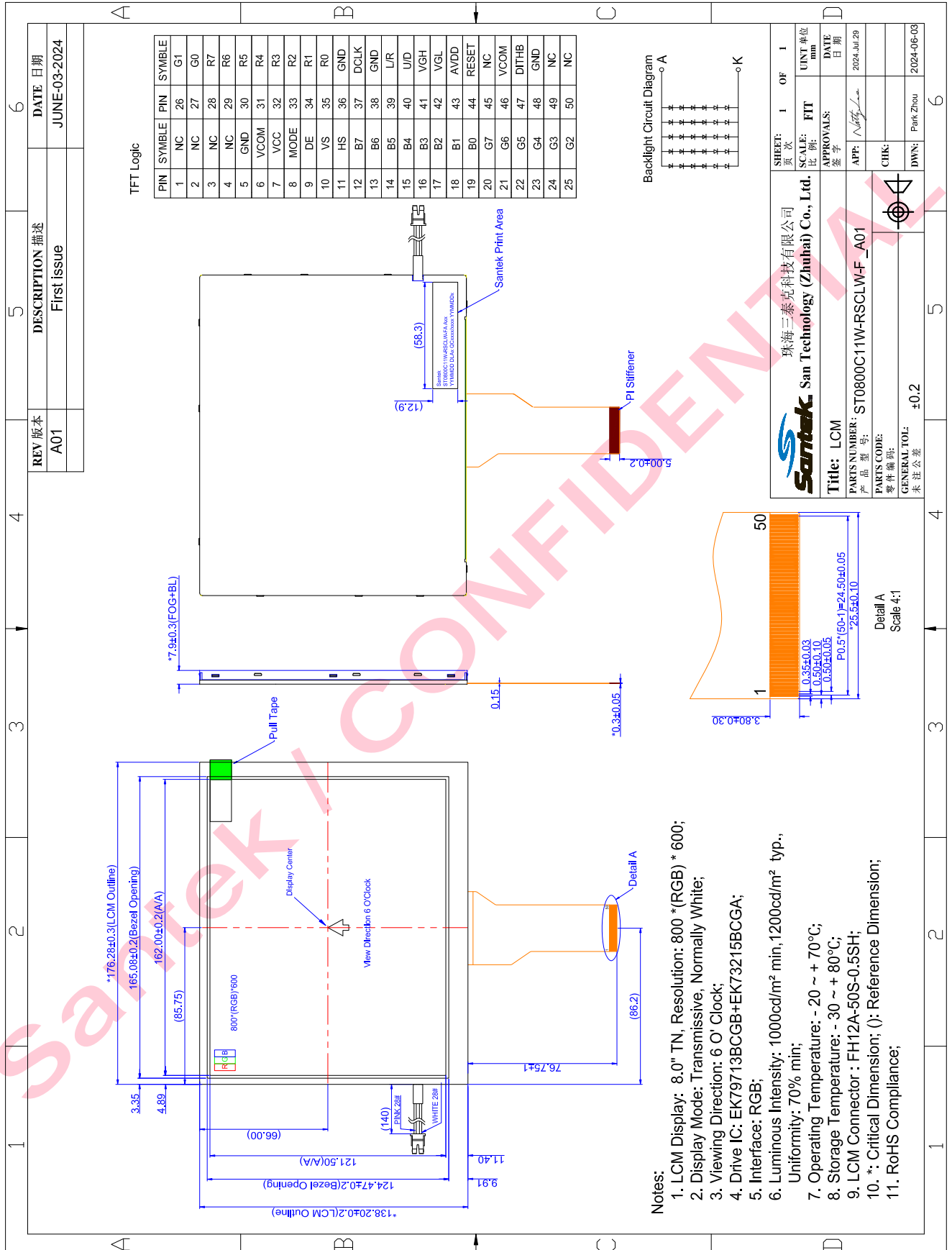
6.4. Storage

1. Store the module in a dark room where must keep at $25\pm 10^{\circ}\text{C}$ and 65%RH or less.
2. Do not store the module in surroundings containing organic solvent or corrosive gas.
3. Store the module in an anti-electrostatic container or bag.

6.5. Cleaning

1. Do not wipe the polarizer with dry cloth. It might cause scratch.
2. Only use a soft sloth with IPA to wipe the polarizer, other chemicals might permanent damage to the polarizer.

7. Mechanical Drawing



8. Package Drawing

8.1 Packaging Material Table

No.	Item	Model (Material)	Dimensions(mm)	Unit Weight (kg)	Quantity	Remark
1	LCM Module	ST0800C11W-RSCLW-F	176.28 × 138.2 × 7.9	0.315	30pcs	
2	Partition	BC Corrugated paper	512 × 349 × 226	1.184	1set	
3	Corrugated Bar	B Corrugated paper	349 × 186 × 38	0.155	4pcs	
4	Dust-Proof Bag	PE	700 × 530	0.060	1pcs	
5	A/S Bag	PE	220.0 × 200.0 × 0.2	0.003	30pcs	
6	Carton	Corrugated paper	530 × 355 × 255	1.100	1pcs	
7	Total weight	12.36Kg±5%				

8.2 Packaging Quantity

Total LCM quantity in Carton: no. of Partition 2 Rows × quantity per Row 15 = 30
--

8.3 Packaging Drawing

